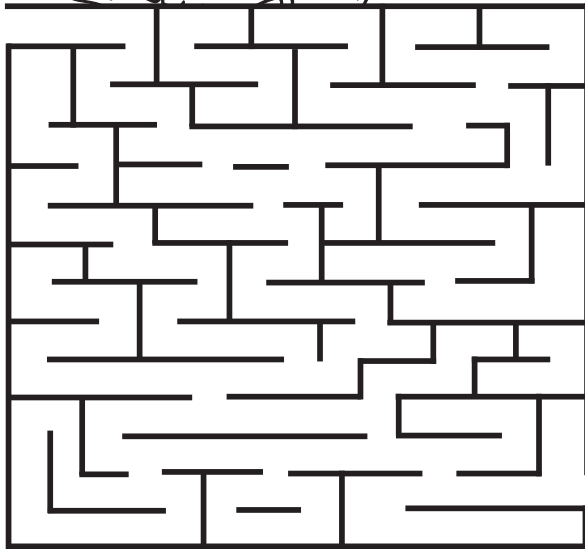


Help protect Kauri

Kauri are the longest living trees in Aotearoa New Zealand and can live for more than 2,000 years!

These taonga (treasures) are native and only grow in the northern part of New Zealand. Nowhere else in the world has them! These special trees are under threat from a microscopic organism that lives in the soil. When it infects Kauri trees they get very sick and die. We can all do our part to protect these special trees! Carry out these steps to stop the spread and protect the whole forest.

1. **Scrub** your shoes clean
2. **Check** closely and make sure there is no soil left
3. **Spray** with the disinfectant

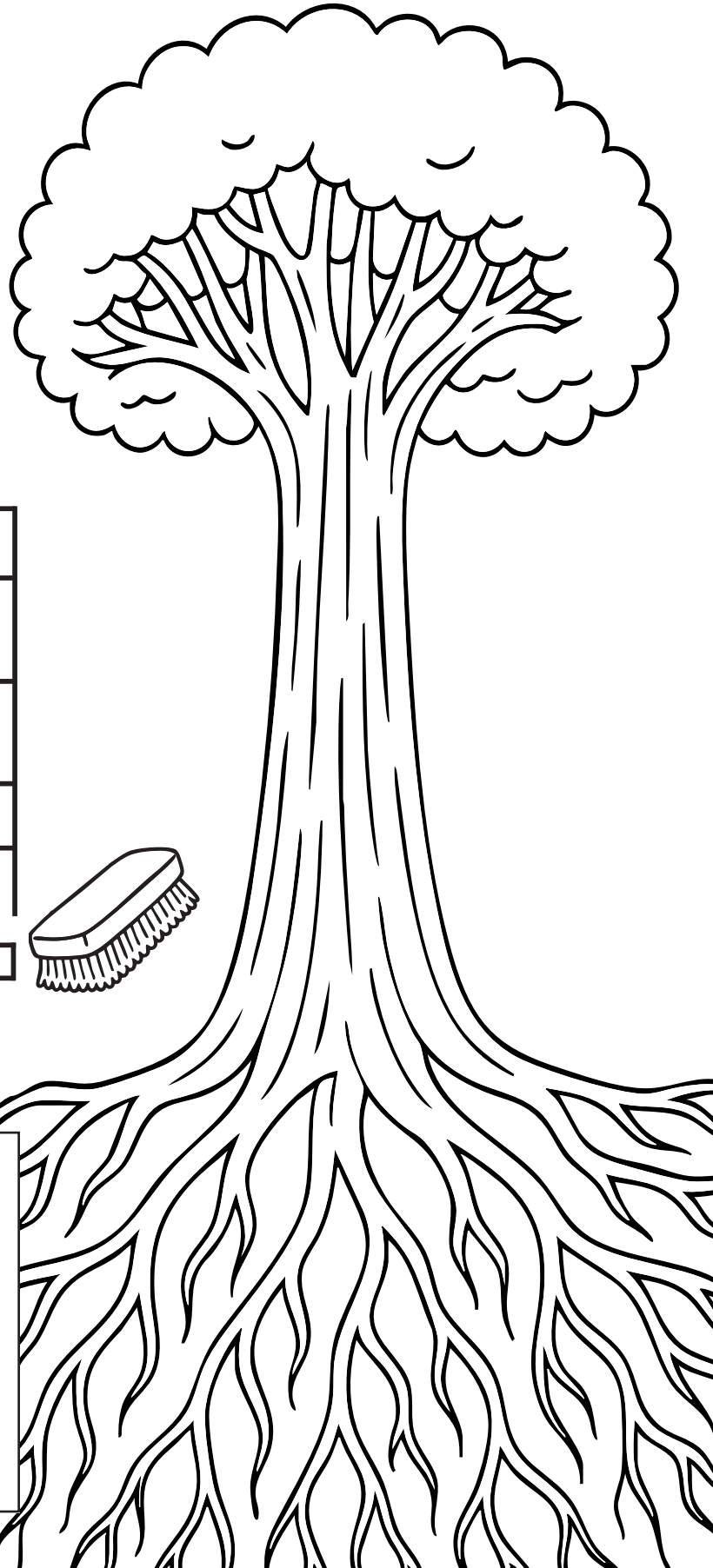


Connect the shoes with the brush to clean them and keep Kauri safe!

Kauri roots spread out three times wider than the tree you see above!

When you visit Kauri:

1. Stay on the track
2. Don't walk on their roots
3. Give them lots of space to grow



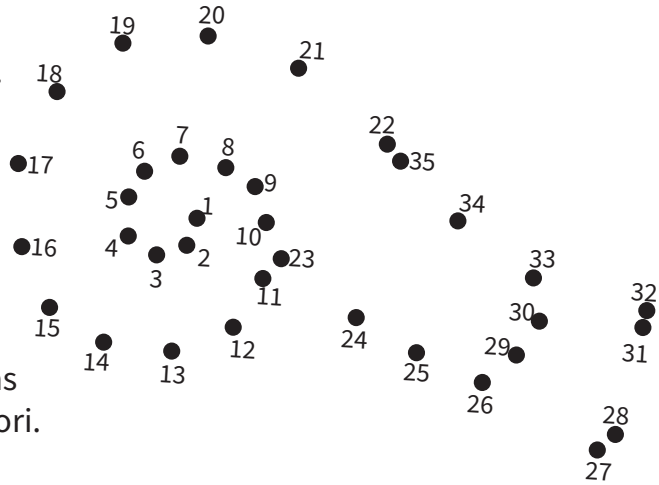
Who lives in the Kauri ngahere?

Kauri ngahere (forests) are home to many different species - plants, animals and fungi. Join the dots to find out who this one is.

KAURI _ _ _ _ _



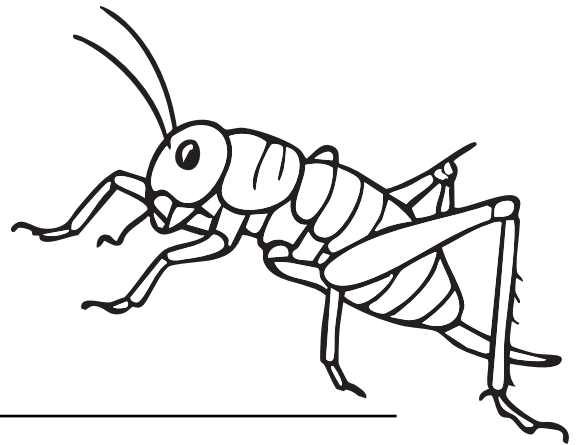
They are also known as pūpūrangī in te reo Māori.



Hidden in this wordfind are a few of the many species that live in Kauri ngahere. Can you find them all?

N	W	E	T	A	H	K	R	W	K	W	G	A
O	R	K	N	K	I	N	U	R	O	T	P	U
P	E	P	W	T	U	I	W	H	W	R	U	N
E	U	E	U	I	N	T	G	N	H	I	P	E
K	R	G	T	U	A	T	A	R	A	N	U	O
A	U	K	E	R	E	R	U	G	R	P	R	A
P	G	A	O	A	P	A	G	U	A	U	A	T
E	A	K	I	W	E	R	A	K	W	W	N	A
K	H	A	U	G	A	K	T	P	H	U	G	W
A	N	R	N	I	K	A	U	I	A	T	I	K
G	W	I	K	R	T	O	R	U	R	U	A	N
U	G	K	T	I	W	A	H	O	A	N	G	U
T	H	I	K	U	I	G	K	P	R	R	W	N

- Kererū
- Tuatara
- Kākāriki
- Kowharawhara
- Wētā
- Ruru
- Nīkau
- Tūi
- Pekapeka
- Pūpūrangī



What can you do to keep Kauri safe in the ngahere? Write the action under the image.

